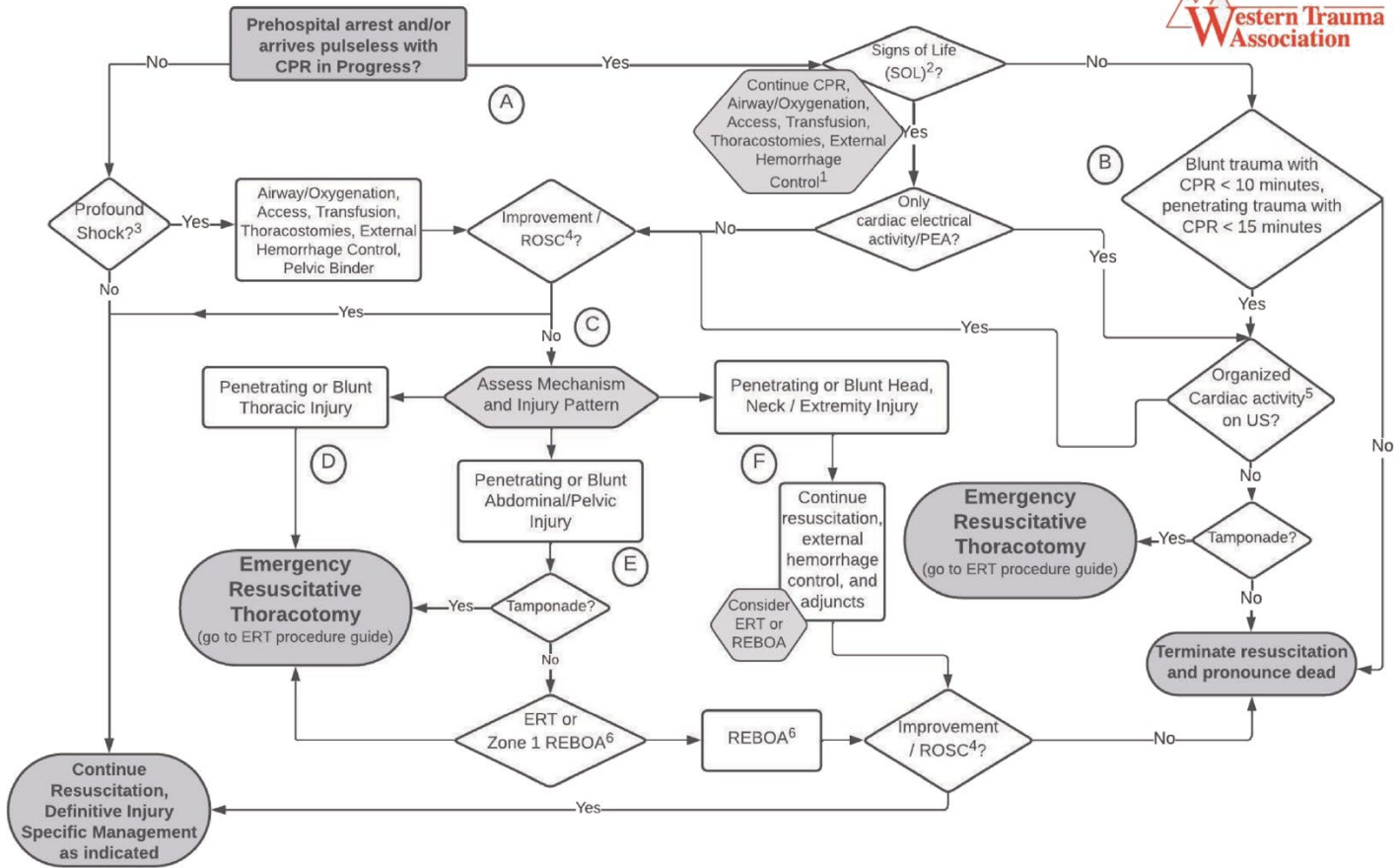
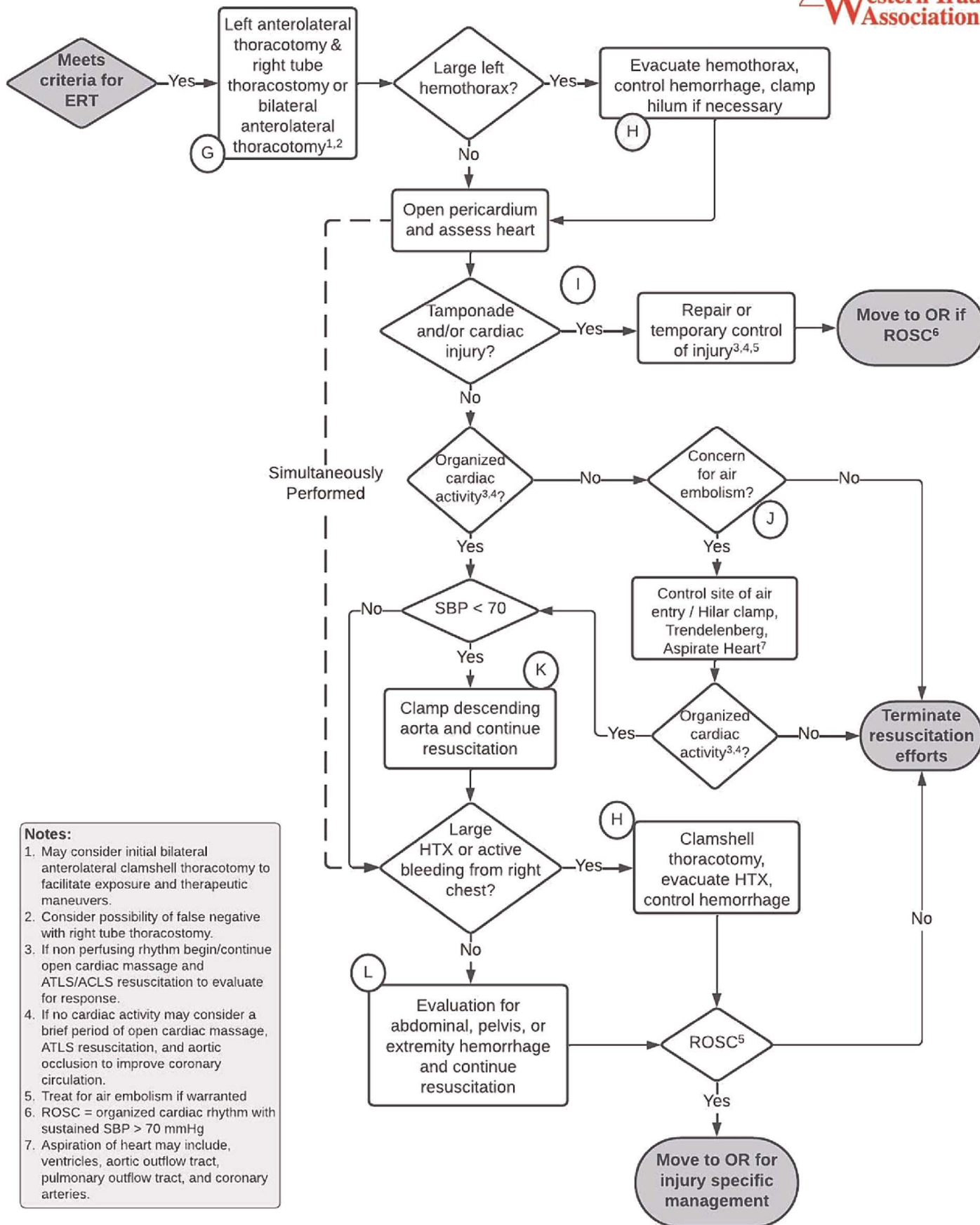


Adult Emergency Resuscitative Thoracotomy (ERT) Algorithm



Adult Emergency Resuscitative Thoracotomy (ERT) Procedure Guide



- Notes:**
1. May consider initial bilateral anterolateral clamshell thoracotomy to facilitate exposure and therapeutic maneuvers.
 2. Consider possibility of false negative with right tube thoracostomy.
 3. If non perfusing rhythm begin/continue open cardiac massage and ATLS/ACLS resuscitation to evaluate for response.
 4. If no cardiac activity may consider a brief period of open cardiac massage, ATLS resuscitation, and aortic occlusion to improve coronary circulation.
 5. Treat for air embolism if warranted
 6. ROSC = organized cardiac rhythm with sustained SBP > 70 mmHg
 7. Aspiration of heart may include, ventricles, aortic outflow tract, pulmonary outflow tract, and coronary arteries.