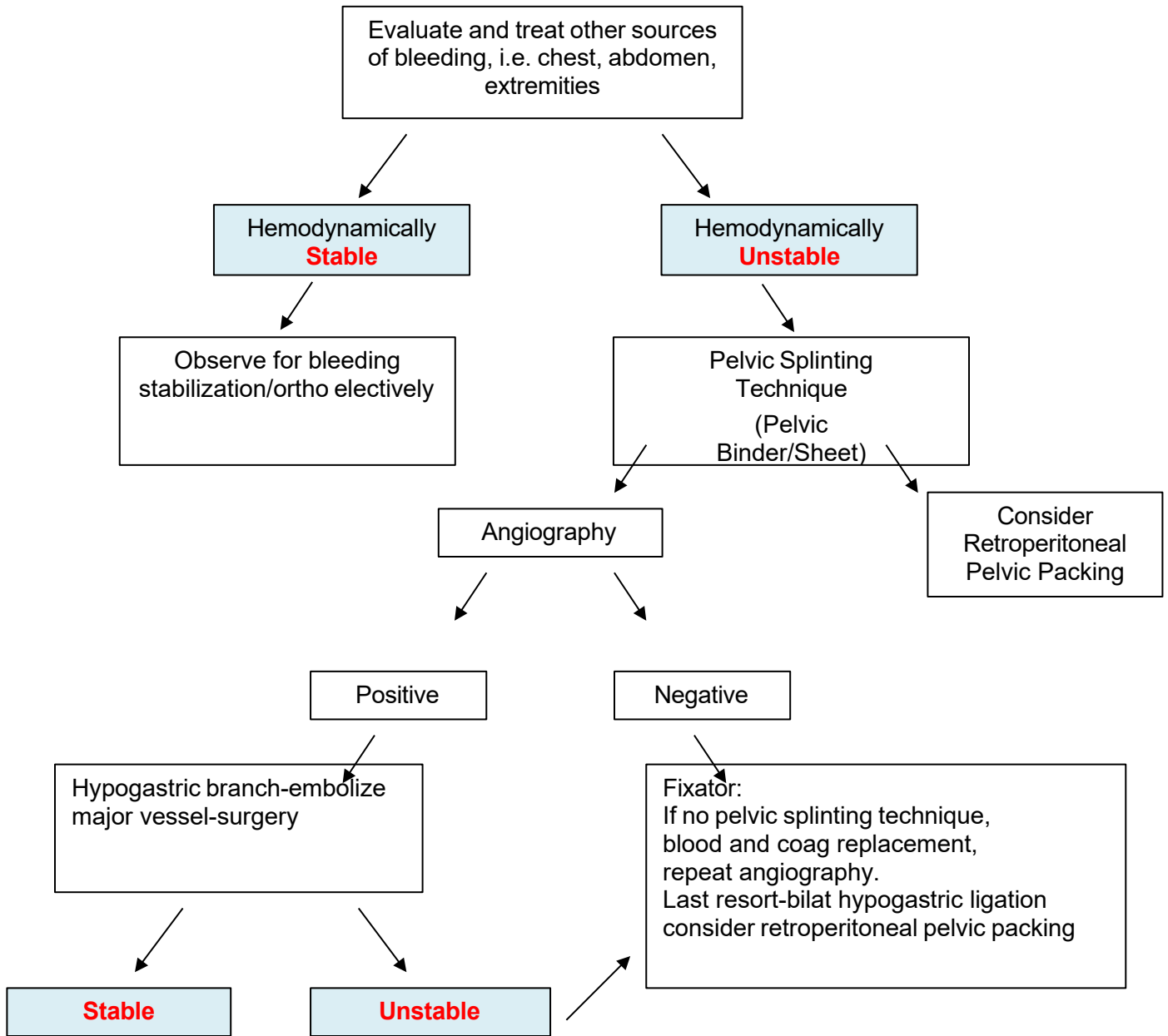


**TM:04:27 Orthopedic Trauma Management (Adult and Pediatric)  
ATTACHMENT 2**

**Guidelines for Hemorrhage Associated with  
Pelvic Fractures**



**Notes:**

\*Unstable = hypotension or 40 mL/kg transfusion following initial source control

\*Large pelvic hematomas are rarely to be entered at laparotomy