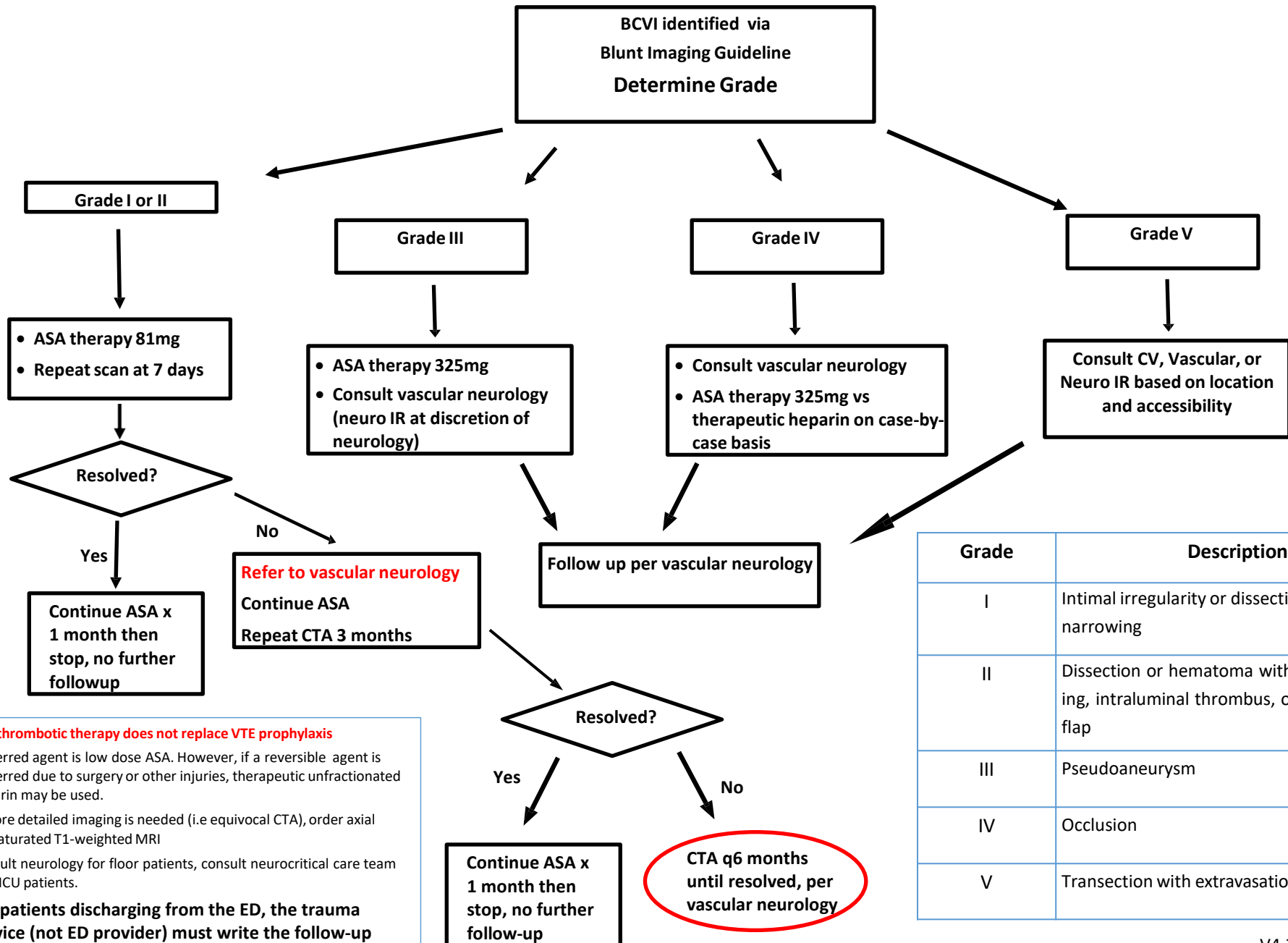


Clinical Practice Guideline

Blunt Carotid / Vertebral Artery Injury (BCVI)



Grade	Description
I	Intimal irregularity or dissection with <25% narrowing
II	Dissection or hematoma with >25% narrowing, intraluminal thrombus, or raised intimal flap
III	Pseudoaneurysm
IV	Occlusion
V	Transection with extravasation

- **Antithrombotic therapy does not replace VTE prophylaxis**
- Preferred agent is low dose ASA. However, if a reversible agent is preferred due to surgery or other injuries, therapeutic unfractionated heparin may be used.
- If more detailed imaging is needed (i.e equivocal CTA), order axial fat-saturated T1-weighted MRI
- Consult neurology for floor patients, consult neurocritical care team for SICU patients.
- **For patients discharging from the ED, the trauma service (not ED provider) must write the follow-up orders (see "How to order tests & route results..." at regionstrauma.org)**