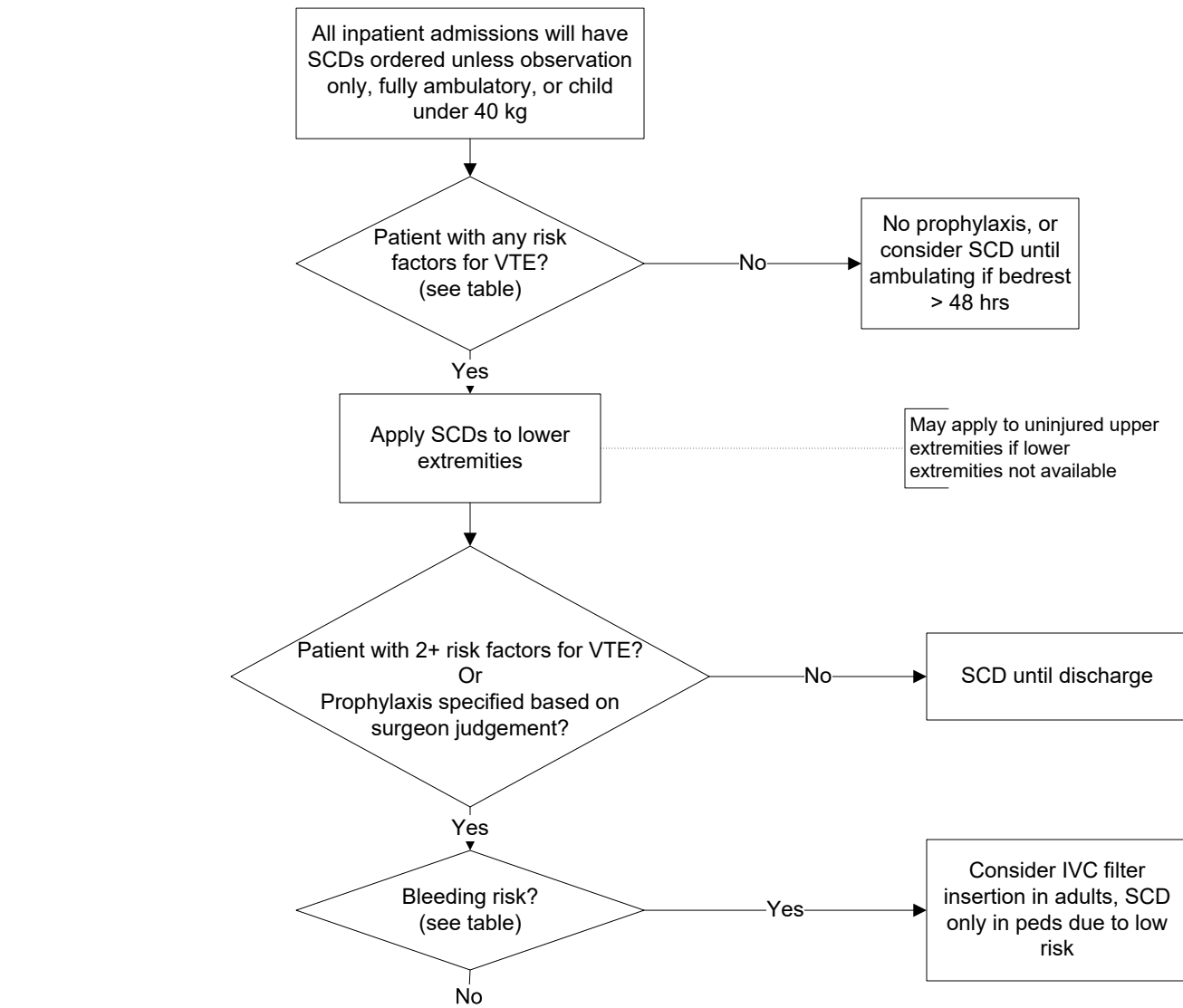


# Regions Hospital Trauma Service Venous Thromboembolism Prophylaxis Practice Guideline



**Enoxaparin**  
**30mg SQ q12 hrs**

Consult pharmacy for dosing / monitoring in patients with BMI > 40, age > 80, or creat clearance < 30ml/min

Duration: Four weeks post-discharge for patients with history of DVT/PE, multiple lower extremity fractures, and pelvic fracture.  
Up to two weeks post-discharge at discretion of attending surgeon for all others.

**All patients receiving chemoprophylaxis should undergo duplex screening of the lower extremities 3 days after first dose and every 7 days thereafter while in hospital unless otherwise directed by the trauma surgeon**

**Special Cases**

- Thrombosis below the popliteal veins (calf vein thrombosis) does not require treatment. It should be followed with serial duplex exams while in hospital and after discharge.
- TBI with ICH – may start enoxaparin 24 hrs after stable head CT
- Spine / spinal cord undergoing fusion – may start enoxaparin on POD 1 even with drain in place
- Orthopedic procedures – Start / continue enoxaparin through night prior to surgery. Resume prophylaxis with evening dose after surgery
- DVT above venous injury / repair or amputation does not require treatment
- Pediatric patients – usually no prophylaxis

**Confirm all special cases with Trauma staff**

**VTE Risk Factors**

1. History of DVT/PE
2. Coma
3. Spine fracture **excluding SP and TP fx**
4. Limited mobility anticipated > 48 hrs
5. Complex or multiple lower extremity fx
6. Pelvic fracture
7. Spinal cord injury
8. Age > 60
9. Obesity (BMI ≥ 30)
10. **Active COVID**
11. Surgeon judgement

**Bleeding Risk**

1. Intracranial hemorrhage or contusion within 24 hrs
2. Incomplete spinal cord injury
3. Nonoperative solid organ injury within 48 hrs
4. Eye injury within 7 days
5. Pelvic fx with significant hemorrhage, transfusion or embolization within 48 hrs
6. Coagulopathy
7. Ongoing resuscitation
8. Operative procedure - 24 hrs prior through 24 hrs after procedure (except Ortho -see special cases)
9. Epidural catheter - 24 hrs pre- and post-insertion, and 24 hrs pre- and post-remova