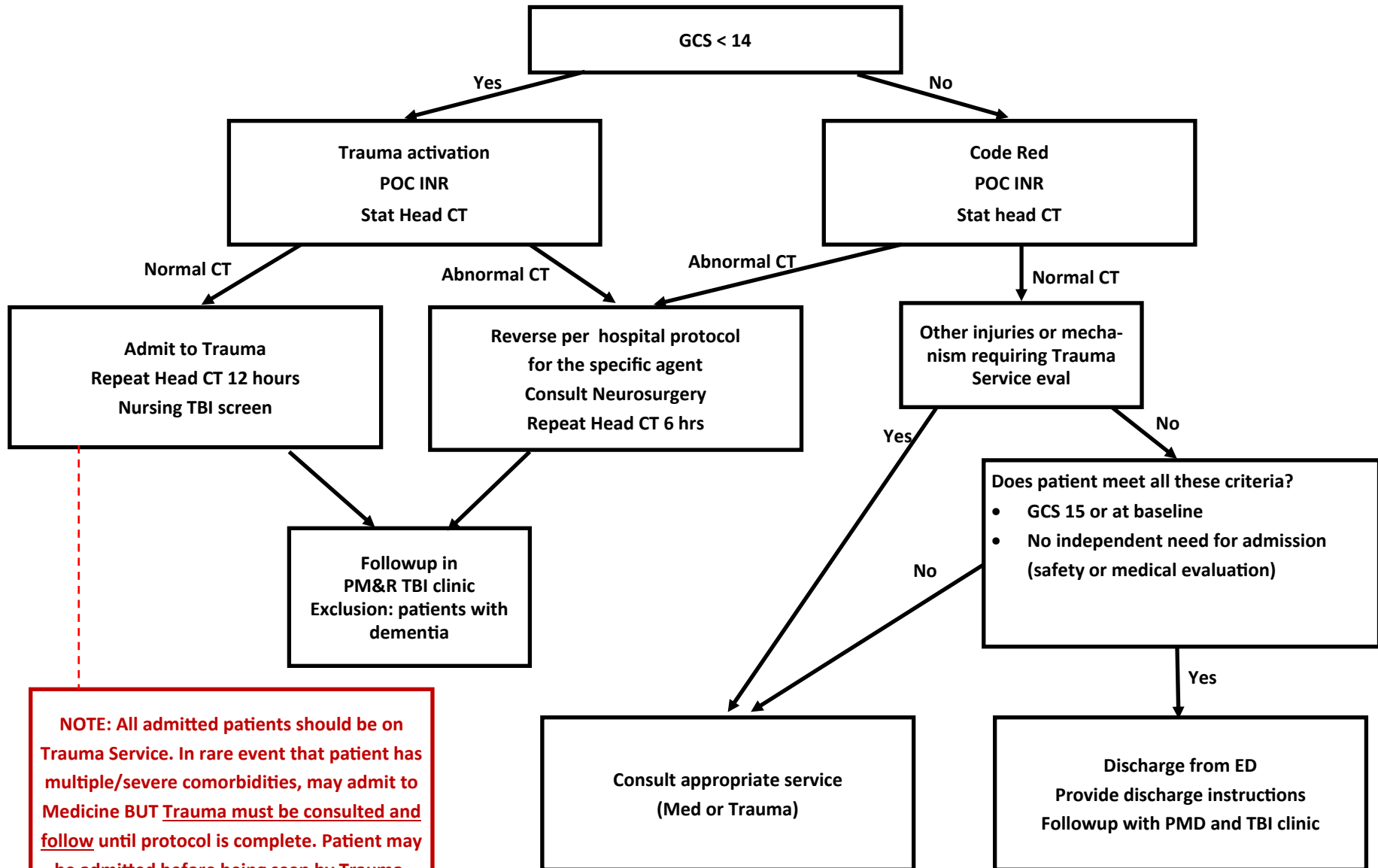


Clinical Practice Guideline
TBI on Anticoagulants \leq 12 hrs post-event
 (includes warfarin, antiplatelet agents other than ASA, and NOACs)



NOTE: All admitted patients should be on Trauma Service. In rare event that patient has multiple/severe comorbidities, may admit to Medicine BUT Trauma must be consulted and follow until protocol is complete. Patient may be admitted before being seen by Trauma.